

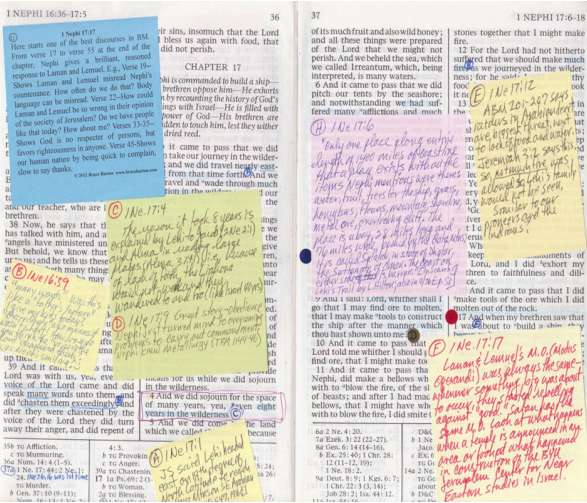
Insert Pages

An insert page is really anything you “insert” into your scriptures. This tutorial will give you numerous ideas on how to enhance your scripture study by using insert pages. Please refer to the end of this document for instructions on how to glue insert pages into your scriptures.

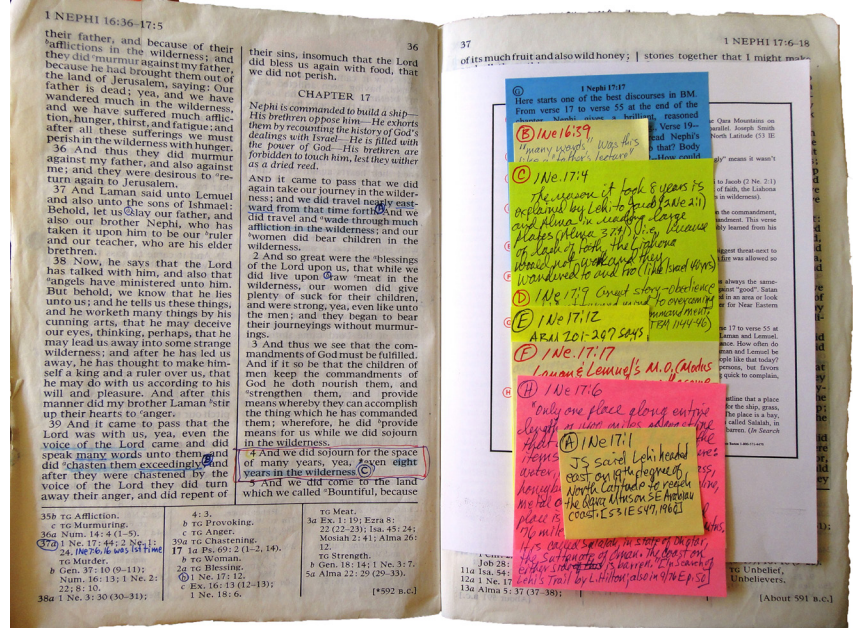
(Don't worry - it's not permanent!)

1. Have your scriptures started to look like this? We love using sticky notes in our scriptures - but they do have a tendency to grow!

To go from this . . .



To this . . .



- (A) 1 Ne. 16:39 Was this like a father's lecture today? It wasn't short "Many words"
- (B) 1 Ne. 17:1 LID&WJ 124 says to reach the "paradise in the Qara Mountains on southern coast of Arabia" you need to head east on the 19th parallel. Joseph Smith confirmed this by saying they turned east on the 19th degree of North Latitude. (53 IE 547, 1950)
- (C) 1 Ne. 17:4 The reason it took 8 years is further explained by Lehi to Jacob (2 Ne. 2:1) and Alma in reading large plates (Alma 37:41). Because of lack of faith, the Liahona would not work and they wandered to and fro (like Israel for 40 years in wilderness). See my commentary
- (D) 1 Ne. 17:6 "Only one place along entire length of 1400 miles of coastline that a place exists with all the items Nephi mentions were there: water, fruit, trees for the ship, grass, honeybees, flowers, mountain, shoreline, metal ore, overlooking cliff. The place is a bay, 28 miles long and 7 miles wide, backed by the Qara Mountains. It is called Salalah, in the state of Dhofar, the Suttanate of Oman. The coast on either side is barren." (In Search of Lehi's Trail by L. Hilton. Also in 9/76 E.p.50)
- (E) 1 Ne. 17:9 Tremendous story on how to obey. He didn't question the commandment, but turned his mind to overcoming problems to carry out the commandment. This verse also shows that Nephi was competent in metallurgy which he probably learned from his father. (TBM 1144-46)
- (F) 1 Ne. 17:12 ABM 201-207 says raiders in Arabian desert are the biggest threat—next to lack of food and water. Jeremiah 3:2 also mentions this. So, not much fire was allowed so they would not be seen. Similar to the pioneers and Indians.
- (G) 1 Ne. 17:17 Laman and Lemuel's "M.O." (Modus Operandi) was always the same—whenever something big was about to occur, they started rebelling against "good." Satan has the same M.O. Look at what happens when a temple is announced in an area. Or the building of the BYU Jerusalem Center for Near Eastern Studies.
- (H) 1 Ne. 17:17 Here starts one of the best discourses in BM. From verse 17 to verse 55 at the end of chapter, Nephi gives a brilliant, reasoned response to Laman and Lemuel. Verse 19—Shows Laman and Lemuel misread Nephi's countenance. How often do we do that? Verse 22—How could Laman and Lemuel be so wrong in their opinion of the society of Jerusalem? Do we have people like that today? How about myself? Verses 33-35—Show God is no respecter of persons, but favors righteousness in anyone. Verse 45—Shows our human nature by being quick to complain, slow to say thanks. This is old one before I changed text to not be in verse sequence.

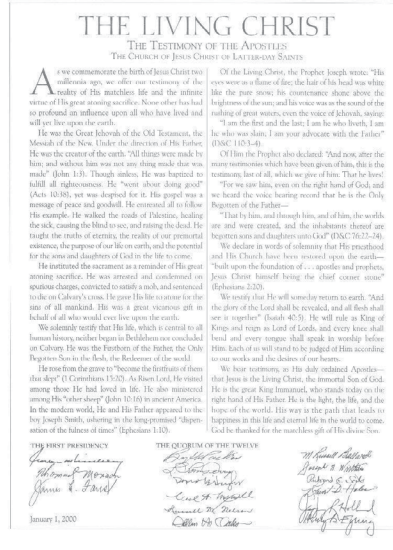
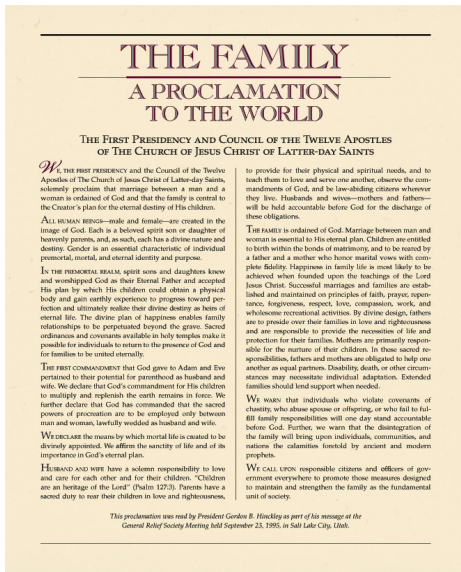
2. An ultimately, you can type up your sticky notes, print them and then put the page in your scriptures. So now your sticky notes look like the picture to the left.

You can also use this same concept to type up anything you'd like to have in your scriptures. by using a computer program to create your document.

If you can print something - it can be an insert page.
The next few examples are how to use your computer to make inserts.

3. Patriarchal Blessing. This is a great thing to have in your scriptures. You can scan the pages or take a picture of them to get the image on your computer. Then just print it off in the correct size to fit in your scriptures.

4. *The Family: A Proclamation To The World* and *The Living Christ*. Both of these can be downloaded from www.lds.org, reduced in size and printed.



5. Photos. Again, anything you print can be added to your scriptures. A picture is worth a thousand words. Use this form of insert to help you learn and remember certain scriptures.

1 NEPHI 4:3-19

did follow and were drowned in the waters of the Red Sea.

11 And the Spirit said unto me Behold, the Lord hath led him into the wilderness. Yea, I also knew that he had sought away mine own life; yea, would not hearken unto the commandments of the Lord; and he ¹ taken away our property, and it came to pass that he aid unto me again: Slay him, Lord hath delivered him into thine hands; and I smote off his head with my sword.

19 And after I had smitten off his head with his own sword.

3a 1 Ne. 3: 30 (29-31); 7: 10.
b 7c Doubt.
c 7c Deliverance.
6a 7c Guidance; Divine; Holy Ghost; Gifts of Inspiration.
b Heb. 11: 8.

b 1 Ne. 7: 11.
c 1 Ne. 3: 26.
b 7c Doubt.
29; Ps. 139: 19;
1 Ne. 17: 37 (33-38); D&C 98: 32 (31-32).
b 7c Justice; Punishment; Wickedness.

14a Omni 1: 6; Mosiah 2: 22; Ether 2: 7 (7-12).
b 7c Commandments of God.
c 1 Ne. 2: 20.
d 1 Ne. 17: 13 (13-14); Jacob 2: 12.
15a Mosiah 1: 5 (1-6).

6. Articles. Nephi told us to liken the scriptures unto us. A great thing to do is find which scriptures apply to current local and world news. At times there will be articles from magazines, newspapers or online that have special meaning to you. These can easily be added to your scriptures as insert pages.

How to glue insert pages into your scriptures

1. Prepare your insert page. Once you know the width and height of the page, you can make your insert page and cut it to fit your scriptures. Place the insert page in your scriptures as a test before you glue it, so you know where you want it.

2. Turn the insert page so the back is facing you. Put it on top of a piece of paper so the glue won't get on your table. On the edge that will be in the center of your scriptures, place a narrow strip of **removable** glue - about 1/8" thick.



3. Spread your scriptures open and push the insert page straight into the center.



4. Run your fingers along the edge of the front of the insert page to secure it in place.

You're Done!

BE CAREFUL! The more insert pages you put in your scriptures the more they will "bow out." Some people have said they put in so many pages, it caused problems with the binding. If you don't want to take this chance, however remote it is, don't use insert pages. We don't think this is a big problem, but we thought we would let you know.